

Bourdon Tube Pressure Gauges

All Stainless Steel, Case With Bayonet Ring or Wide Ring

Ø 40 mm (1½"), Ø 50 mm (2"), Ø 63 mm (2½"), Ø 80 mm (3"),
Ø 100 mm (4") and Ø 160 mm (6")

Models :
BI / BIA

APPLICATIONS

For fluid and gaseous media (compatible to the wetted materials), which are not highly viscous and do not tend to polymerize, especially where a sealed Case (dirty-damp or corrosive atmosphere) and / or chemical resistance is required.

NOMINAL HEAD DIAMETERS

Ø 40 mm (1 ½"), Ø 50 mm (2")
Ø 63 mm (2 ½"), Ø 80 mm (3")
Ø 100 mm (4"), Ø 160 mm (6")

ACCURACY CLASS

Ø 40 mm (1 ½"), Ø 50 mm (2"), Ø 63 mm (2 ½") :
Accuracy 1,6 according to EN standards
(i.e. ± max. 1,6% of full span)

Ø 80 mm (3"), Ø 100 mm (4"), Ø 160 mm (6") :
Accuracy 1,0 according to EN standards
(i.e. ± max. 1,0% of full span)

PRESSURE RANGES (EN 837)

0/0.6 to 0/4.000 bar resp. 0/10 to 0/60.000 psi, also
corresponding vacuum and compound pressure ranges,
see [standard ranges page 4](#)

PRESSURE LIMITATIONS

Steady pressure : full scale value
Cyclic pressure : 90% of full scale value
Temporary : 130% of full scale value

TEMPERATURE LIMITATIONS

Ambient Temp. : Dry : - 40 °C to + 60 °C
Liquid Filled : - 20 °C to + 60 °C
Medium Temp. : Dry : +200 °C Maximal
Liquid Filled : + 70 °C Maximal

PROTECTION TYPE (EN 60 529 / IEC 529)

IP 54 dry version / IP 65 filled version

STANDARD CONFIGURATION

CASE AND RING

Stainless Steel AISI 304, polished ring

SOCKET AND BOURDON TUBE

In AISI 316 L stainless steel, argon are welded
• 600 psi resp 40 bar and bellow = C form
• 800 psi resp 60 bar and above = helical

MOVEMENT

Stainless Steel AISI 316 L

DIAL PLATE

Aluminium alloy, black figures, white background

POINTER

Aluminium black or Micro-adjustable pointer

PROCESS CONNECTION

See dimensional data

WINDOW

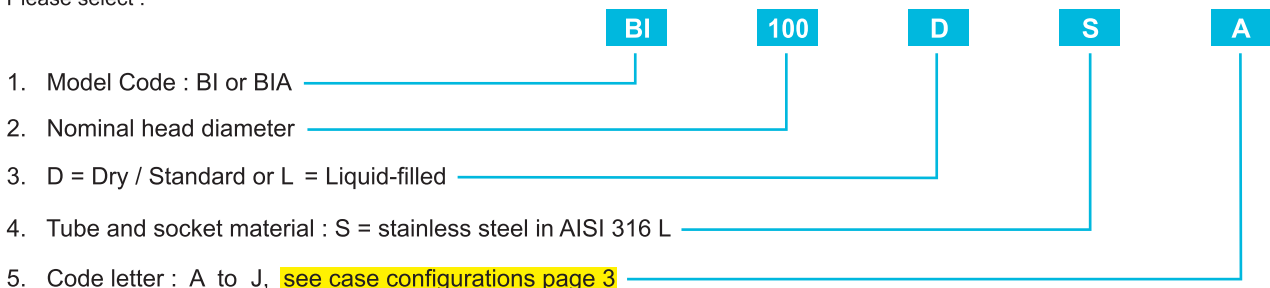
Laminated safety glass or single strength glass

SPECIAL OPTIONS

- ⇒ Process connection threads or sizes
(M20x1,5, ½" BSP, ¼" BSP, ¼" PT, others) upon request
- ⇒ Wetted parts in Monel
- ⇒ Other case filling, e.g. silicone oil
- ⇒ Special scales, such as dual ranges, special units,
fine division (with knife edge pointer) etc.
- ⇒ Oxygen service, free of grease and oil
- ⇒ Receiver gauges, 0.2 - 1 bar or 3 - 15 psi
- ⇒ Stationary red pointer on the dial plate
- ⇒ With Electrical Accessories
 - reed switches for Ø 63 mm (2½")
 - standard contacts, magnetic contacts or
inductive electronic or pneumatic limit switches

HOW TO ORDER :

Please select :



EXAMPLE OF ORDER NUMBER

Pressure Gauges, Ø 100 mm
Material all stainless steel
Range : 0-10 Kg/cm²
Bottom connection : ½" NPT
Liquid Filled
Order Number : **BI 100 LSA**

Pressure Gauges, Ø 63 mm
Material all stainless steel
Range : 0-10.000 psi/bar
Lower back connection : ¼" NPT
Liquid Filled, Panel Mounting
Order Number : **BI 063 LSJ**

Bourdon Tube Pressure Gauges

All Stainless Steel, Case With Bayonet Ring or Wide Ring

Ø 40 mm (1½"), Ø 50 mm (2"), Ø 63 mm (2½"), Ø 80 mm (3"),
Ø 100 mm (4") and Ø 160 mm (6")

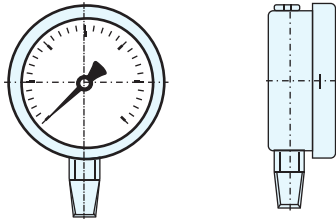
Models :
BI / BIA

CODE LETTER ACCORDING TO CASE CONFIGURATIONS AND HEAD DESIGN

BOTTOM CONNECTION

Code Letter :

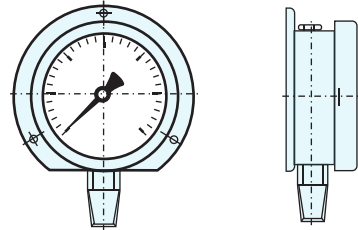
A



BOTTOM CONNECTION REAR FLANGE FOR PANEL MOUNTING

Code Letter :

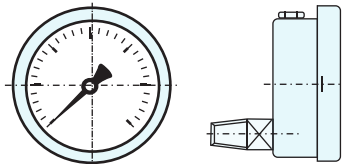
B



LOWER BACK CONNECTION

Code Letter :

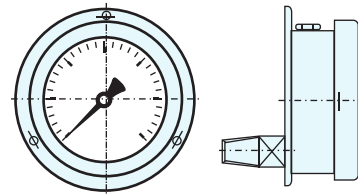
C



LOWER BACK CONNECTION REAR FLANGE FOR PANEL MOUNTING

Code Letter :

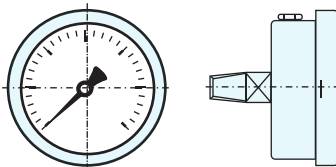
D



CENTER BACK CONNECTION

Code Letter :

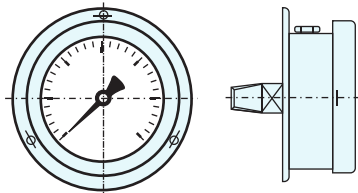
E



CENTER BACK CONNECTION REAR FLANGE FOR PANEL MOUNTING,

Code Letter :

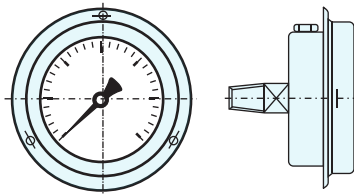
F



CENTER BACK CONNECTION FRONT FLANGE FOR PANEL MOUNTING

Code Letter :

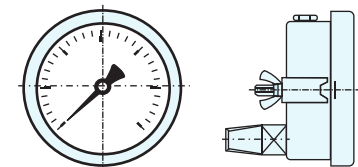
G



LOWER BACK CONNECTION U-CLAMP FOR PANEL MOUNTING

Code Letter :

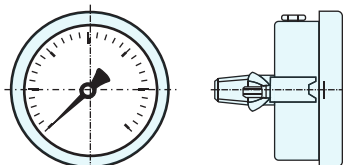
H



CENTER BACK CONNECTION U-CLAMP FOR PANEL MOUNTING

Code Letter :

I



LOWER BACK CONNECTION, FRONT FLANGE FOR PANEL MOUNTING,

Code Letter :

J

