

Bourdon Tube Pressure Gauges With Limit-Switch Contact

All Stainless Steel, Case With Bayonet Ring

Ø 100 mm (4") and Ø 160 mm (6")

Standard (BIE 100 / 160 DS) or Glycerine Filled (BIE 100 / 160 LS)

Models :

BIE 100 DS/BIE 160 DS

BIE 100 LS/BIE 160 LS

NOMINAL HEAD DIAMETERS

Ø 100 mm (4") and Ø 160 mm (6")

MAKE/BREAK OPERATIONS

The available make/break operations of single and double contacts are shown in the table below.

CODE LETTER

S = standard contact, **M** = magnetic contact and

I = inductive contact


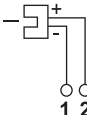

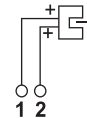


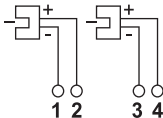

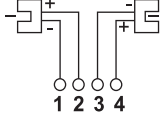

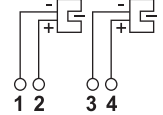

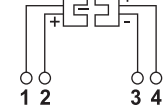
CODE NUMBER 1, MAKING CONTACT

Closes when the set point is passed in the clockwise direction (i.e. opens in counterclockwise direction)

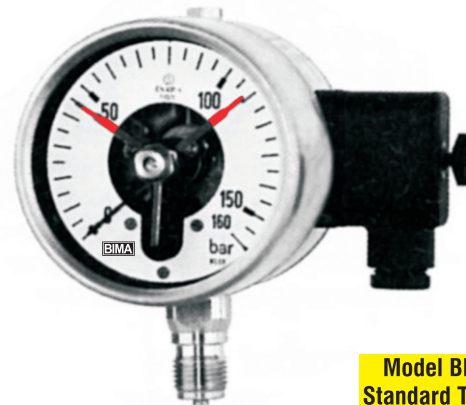
CODE NUMBER 2, BREAKING CONTACT

Opens when the set point is passed in the clockwise direction (i.e. closes in counterclockwise direction)

CODE NUMBER 3, CHANGEOVER CONTACT

Circuit Diagram		Make/Break Operation with Pointer Moving Clockwise	Type Standard Magnetic Inductive
Standard Magnetic	Inductive		
Contact assembly with one contact:			
		Breaking	S 2 M 2 I 2
		Making	S 1 M 1 I 1
Contact assembly with change - over contact:			
	Connection 1 and 4 : making Connection 2 and 4 : breaking		S 3 M 3
Contact assembly with double contacts:			
		1 st and 2 nd contacts both breaking	S 22 M 22 I 22
		1 st contacts breaking 2 nd contacts making	S 21 M 21 I 21
		1 st and 2 nd contacts both making	S 11 M 11 I 11
		1 st contacts making 2 nd contacts breaking	S 12 M 12 I 12

SPECIAL OPTIONS With 3 and 4 contact are available

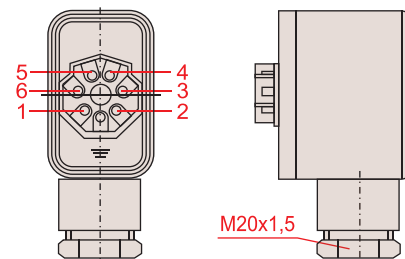


**Model BIE
Standard Type**

ELECTRICAL CONNECTIONS

EUROPEAN UNIVERSAL PLUG CONNECTOR

The terminals in the connecting box are also numbered as shown in the circuit diagrams. A ground terminal is provided. The universal plug connector is delivered with a screwed cable gland M20x1,5 with strain relief.



OTHER MODEL OPTION

MODEL BIE 1

Model snap action contact in modular system with polycarbonat case complete with 2 m cable gland

Drawing (see page 18)

HOW TO ORDER

Please select :

1. Model code : BIE/BIE1
2. Nominal head diameter
3. D = Dry / Standard, L = Liquid filled
4. Tube and socket material :
S = Stainless steel AISI 316 L
5. Code letter (see case configurations page 16)

EXAMPLE OF ORDER NUMBER

Pressure Gauges, Ø 100 mm
Material all stainless steel
Range : 0- 40 kg/cm²
Bottom connection : ½" NPT
Double contact M 21
Order Number : **BIE 100 DSA, M 21**

Bourdon Tube Pressure Gauges With Limit-Switch Contact

All Stainless Steel, Case With Bayonet Ring

Ø 100 mm (4") and Ø 160 mm (6")

Standard (BIE 100 / 160 DS) or Glycerine Filled (BIE 100 / 160 LS)

Models :

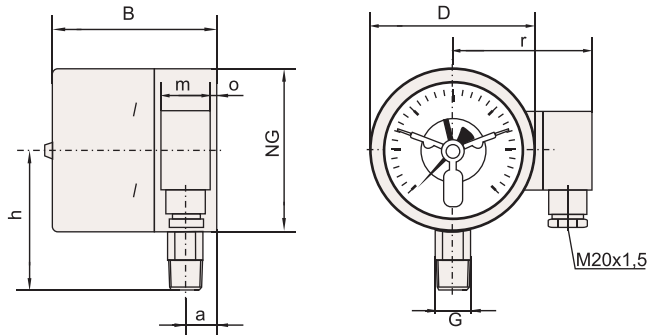
BIE 100 DS/BIE 160 DS

BIE 100 LS/BIE 160 LS

CASE CONFIGURATIONS AND DIMENSIONAL DATA : MODEL BIE (STANDARD TYPE)

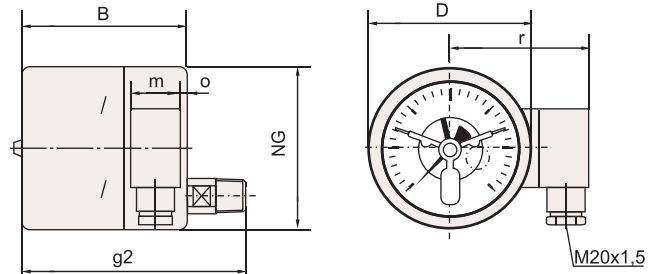
Bottom Connection

Code Letter : **A**



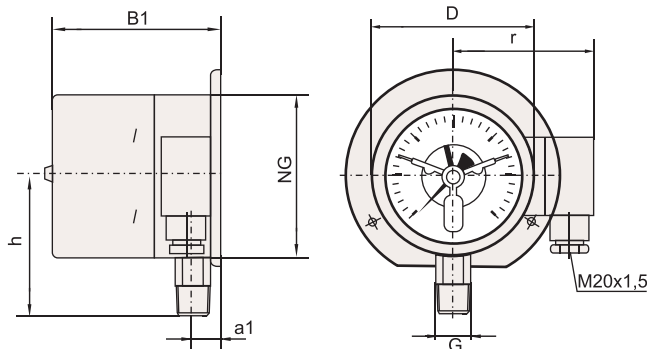
Lower Back Connection

Code Letter : **C**



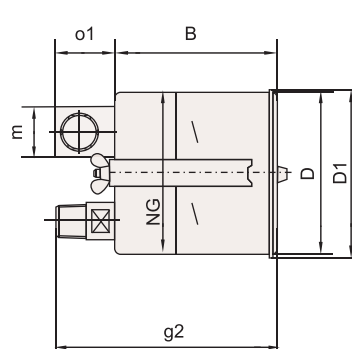
Bottom Connection Rear flange for Panel Mounting

Code Letter : **B**



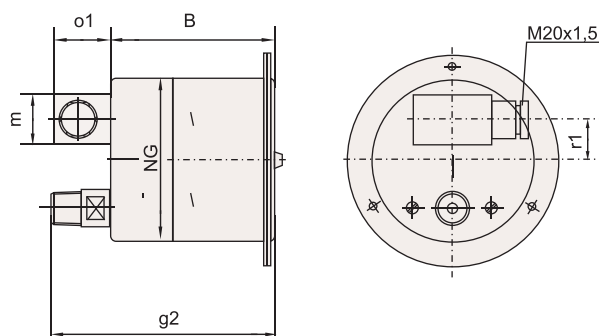
Lower Back Connection U-Clamp for Panel Mounting

Code Letter : **H**



Lower Back Connection, front flange for Panel Mounting

Code Letter : **J**



OTHER MODEL OPTION

MODEL BIE 1

Model Snap Action Contact in modular system with polycarbonat case complete with 2 m cable gland



Dimensional Data (mm) and Weight (kg)

Nominal Case Size	a	a1	B	B1	D	D1	g2	h±1	m	o	o1	r	r7	G	Weight approx	
															Dry	Liquid Filled
100 mm (4")	20	18	103	106	101	106	142	87	31	4	37	88	18	1/2" NPT	0.75	1.15
160 mm (6")	16		105.5	108	161	167	146	115		2		117	36		1.50	2.90